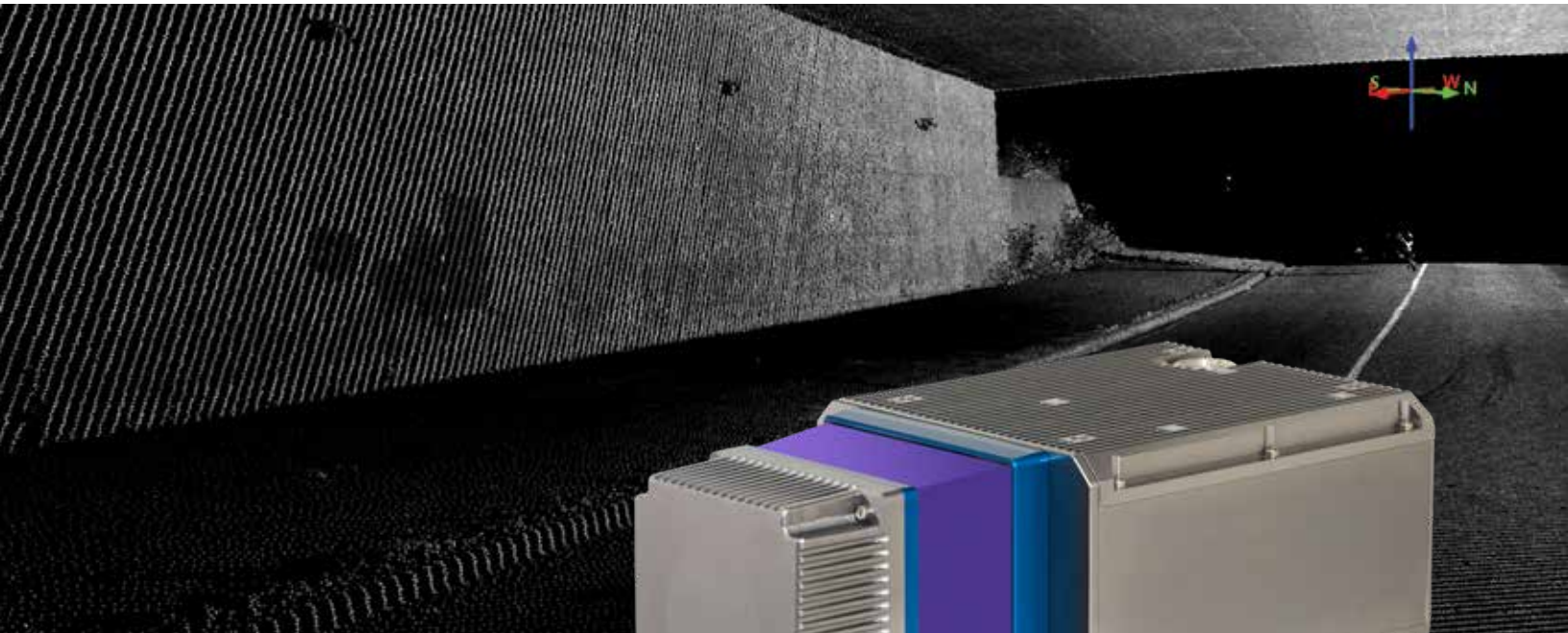




**TELEDYNE OPTECH**  
Everywhereyoulook™

Part of the Teledyne Imaging Group



**NEW**

## CL-360

### 360 Degree Laser Scanner

The Optech CL-360 is a survey grade 360 degree laser scanner enabling OEM hardware manufacturers and integrators to develop the next generation of best-in-class UAV, mobile, and terrestrial scanning solutions for surveying in mapping, engineering, transportation and utility applications.

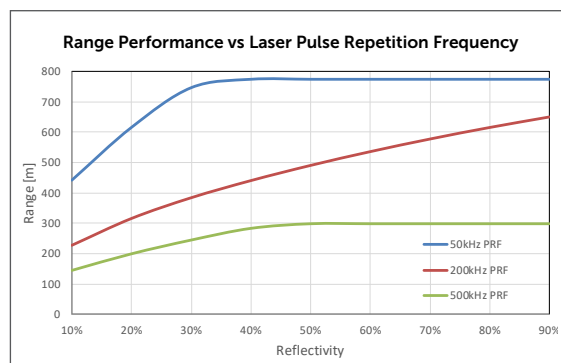
The CL-360 supports a wide range of operating parameters including pulse repetition rate, range, and lines per second to allow it to be optimized for almost any application and data requirements.

# CL-360 Laser Scanner Technical Specifications

**NEW**

ITEM	SPECIFICATION
<b>Laser</b>	
Range measurement principle	Time of Flight
Range Performance <sup>1</sup>	775 m (50 kHz) to 300 m (500 kHz)
Pulse Repetition Frequency	500, 200, 50 kHz (Programmable)
Beam Divergence (1/e <sup>2</sup> )	0.3 mrad
Wavelength	1550 nm
Laser safety classification	Class 1
Range resolution	2 mm
Intensity recording	12 bits
Maximum number of returns	4 (First, Second, Second Last, Last)
Minimum range	1.5 m
Range accuracy 1 sigma <sup>2</sup>	10 mm
Precision single shot <sup>2</sup>	5 mm
<b>Scanning Characteristics</b>	
Field of View	360°
Lines per second [Scan Frequency]	50 – 250 lines/sec
<b>Environmental</b>	
Operating Temperature (min / max)	-10°/+40° C
Storage Temperature (min / max)	-20°/+50° C
Vibration	DO-160H Section 8, Category S, Curve M
Shock	DO-160H Section 7, Category A, Standard Shock
Dimensions	310 mm L x 160 mm W x 116 mm H
Weight	3.5 kg
Protection Class	IP64 (Dust and splash proof)
<b>Power</b>	
Power Supply Input Voltage	11 – 36V
Power Consumption	60W
<b>Interfaces</b>	
Connector 1	Power, RS232, PPS
Connector 2	1000 Mbit/sec Ethernet
Data Storage	240 GB SSD
Post-Processing Software	Windows
Realtime API Library	Windows, Linux

©Teledyne Optech Incorporated. E&OE. Information subject to change without notice. Printed in Canada. 191023



- 99% detection probability, 50 lines/second, 23km visibility, full footprint interception.
- Max Range tested on flat targets, 50 lines/second scan speed, larger than the laser beam diameter, perpendicular angle of incidence and STD Clear visibility (23km).
- Under Optech Test Conditions, contact for details.

Complies with 21 CFG 1040.10 and 1040.11 except for deviations pursuant to Laser Notice No. 50, dated June 24, 2007.



Class 1 Laser Product

## ORDERING INFORMATION

Contact your local Teledyne Optech representative or an authorized Teledyne Optech dealer.



Canadian Space Agency / Agence spatiale canadienne

This program is undertaken with the financial support of the Canadian Space Agency.

[www.teledyneoptech.com](http://www.teledyneoptech.com)

**TELEDYNE OPTECH**  
Everywhere you look™

Part of the Teledyne Imaging Group