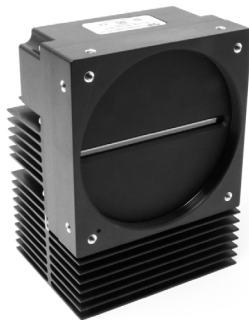


# Linea HS

16K Monochrome CMOS TDI Camera



## Advanced High-Speed, High-Sensitivity TDI Camera with Low-Cost Fiber Optic Connectors

Based on Teledyne DALSA's industry leading CMOS TDI technology, the new Linea HS™ cameras are the most advanced TDI products in the marketplace. These cameras deliver the highest performance available, with unique features that significantly improve detectability for many demanding applications. The cameras come with the next-generation CLHS interface, delivering up to 2.4 Gigapixels per second over two fiber optic cable (with error correction).

### Specifications

Resolution	16,384 x 128 pixels (16K)
Line Rate	150 kHz maximum
Pixel Size	5 $\mu\text{m}$ x 5 $\mu\text{m}$
Data Format	8 or 12 bits, selectable
Output	Monochrome
Lens Mount	M90 x 1 (16K)
Responsivity	See graph
Dynamic Range	70 dB
Nominal Gain Range	1x to 10x
Size	97 mm x 140.5 mm x 78.6 mm (16K)
Mass	< 500 g (8K) and 1.2 kg (16K)
Operating Temp	0 °C to +65 °C (front plate)
Power	+12 V to +24 V DC, Hirose 12-pin
Power Dissipation	21W @ 25C
Control & Data	Camera Link HS, LC
GPIO	Direction and line control
Regulatory Compliance	CE, FCC, and RoHS

### Key Features

- High speed: up to 150 kHz
- High sensitivity
- Up to 100 m optical cable length
- Active pixel assisted alignment marks

### Programmability

- Multiple regions and areas of interest
- 8 or 12 bit output
- Flat field and lens shading correction
- Programmable coefficient sets
- GenICam™ compliant interfacing
- Rapid coefficient changes

### Typical Applications

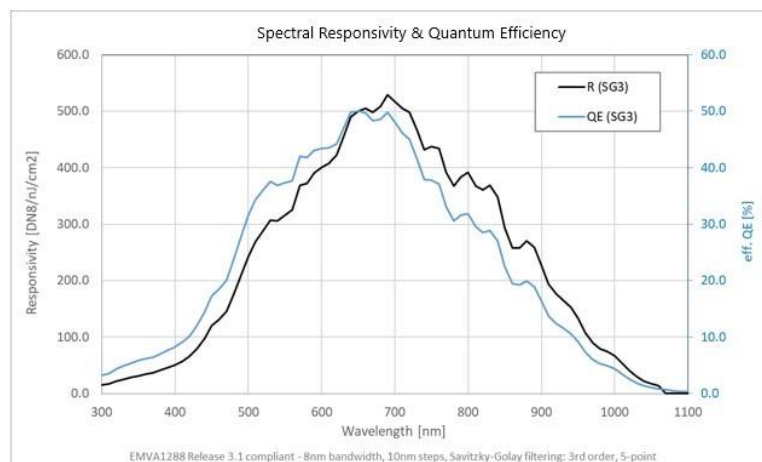
- Flat panel inspection
- Digital pathology
- Printed circuit board inspection



Part of the Teledyne Imaging Group

Linea HS Camera Models

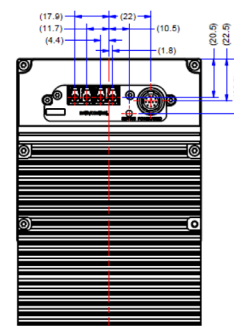
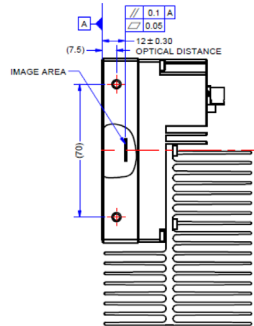
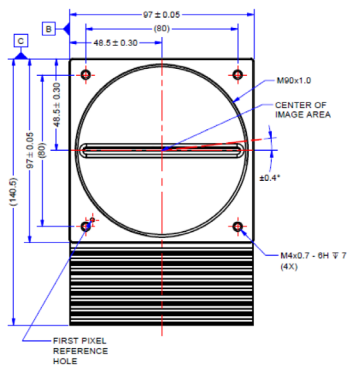
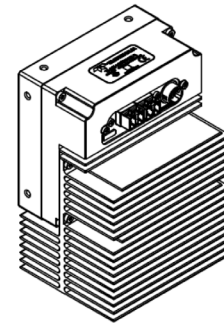
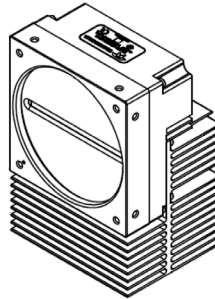
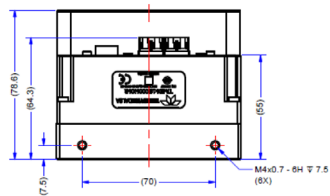
Part Number	Resolution	Max Line Rates	Pixel Size	Output
HL-FM-16K15H-00-R	16,384 x 128	150 kHz	5 $\mu\text{m}$ x 5 $\mu\text{m}$	Monochrome



# Linea HS

## 16K Monochrome CMOS TDI Camera

16K model



NOTES:  
1. UNITS: MILLIMETERS.  
2. IMAGE AREA IS ALIGNED TO DATUMS  $\square$ ,  $\square$  &  $\square$ .

[www.teledynedalsa.com](http://www.teledynedalsa.com)

### Americas

Boston, USA  
+1 978-670-2000  
sales.americas@teledynedalsa.com

### Europe

Krailling, Germany  
+49 89-89-54-57-3-80  
sales.europe@teledynedalsa.com

### Asia Pacific

Tokyo, Japan  
+81 3-5960-6353  
sales.asia@teledynedalsa.com

Shanghai, China  
+86 21-3368-0027  
sales.asia@teledynedalsa.com

The information contained in this document is not subject to Export Control in Canada. Teledyne DALSA, a business unit of Teledyne Digital Imaging Inc., has its corporate offices in Waterloo, Canada. Teledyne DALSA reserves the right to make changes at any time without notice. Teledyne DALSA © 2019. Revision number 03-070-20153-00. Revision date December 2019.



Part of the Teledyne Imaging Group